

# SR SERIES

PRODUCT LINE



THE ULTIMATE  
LISTENING  
EXPERIENCE

SYSTEMS + COAXES + SUBWOOFERS

**polk**audio®

# SYSTEMS

SR6500 + SR5250



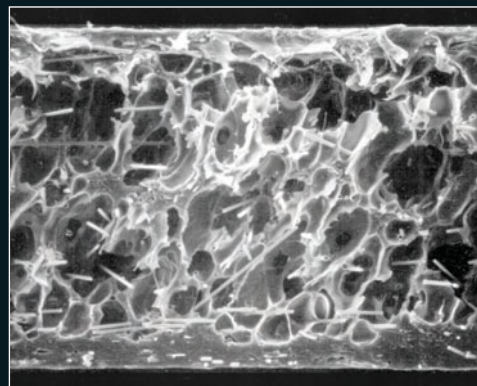
SR6500  
Component System

## ULTIMATE FLEXIBILITY

Based on top-of-the-line award-winning technology, the Polk Audio SR Signature Reference Series 6 1/2" and 5 1/4" Component Systems are for people who want the highest-performance sound for their high-performance wheels.

### Just What Every Hot Car Needs. Better Drivers.

Award-winning Polk Audio technology places the SR Signature Reference Series at the apex of high-performance car audio. The drivers use aerated polypropylene cones for maximum stiffness and minimum cone resonance, ensuring a tight, clean, articulate response. Nitrile butyl rubber surrounds, laser-optimized, vented 2-layer Kapton voice coils and formers, and cast aluminum baskets with extra heat dissipating features, all contribute to the SR Series' professional sound quality and outstanding reliability.



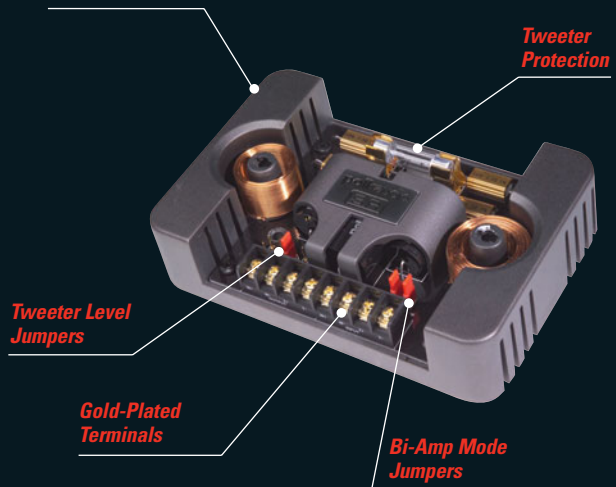
Scanning electron microscope image of SR driver APP cone cross section.

*Polk Audio's Laser Interferometer research has helped us develop and discover new materials and combinations of materials that strike the best balance between stiffness, damping and mass. The best material we have found to date is Aerated Polypropylene (APP), which is a mineral-filled Polypropylene that has been "puffed up" with injected air to form a honeycomb-like structure. We use this material for the cones in our top-of-the-line award-winning LSi in-home loudspeakers that have been widely praised for their exceptional accuracy. Only the APP cone approaches the ideal balance of high stiffness with high damping and high resistance to moisture, UV and temperature extremes. Using virtually mass-less air to stiffen the cone is the ideal solution to achieve higher performance with no loss of efficiency and transient detail.*



**SR5250  
Component System**

**Cast Aluminum  
Heat Sink Chassis**



**Tweeter  
Protection**

**Tweeter Level  
Jumpers**

**Gold-Plated  
Terminals**

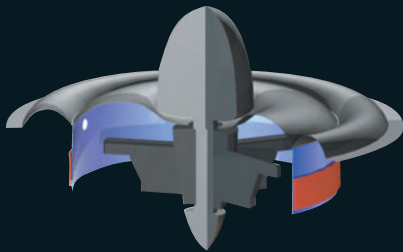
**Bi-Amp Mode  
Jumpers**

**A Sweeter Tweeter.**

Polk's 22mm Ring Radiator Tweeters, usually found only in high-end home speakers, pack high performance and power handling into a small package. A powerful Neodymium Motor Structure with Faraday Cap maintains consistent impedance, lowers distortion, extends and improves high frequency response. The result is razor sharp detail, stunning accuracy, and a top-end response well over 40kHz.

**Great Sound On A Slightly Smaller Scale.**

Rounding out the SR Signature Series is the SR5250, a 5 1/4" version of the SR6500, that features a state-of-the-art Ring Radiator Tweeter, an Aerated Polypropylene cone and all of the other technologies found in the larger SR6500. It may be a little smaller to fit in those smaller, tighter mounting spaces, but its sound is just as big as the SR6500's.



*The Ring Radiator Tweeter's design means there's less opportunity for performance-robbing resonance to develop. The integrated phase plug prevents phase cancellations to maintain flat, smooth response both on- and off-axis.*

**Our Crossovers Make A Beautiful Sound, Too.**

The SR Series outboard crossovers feature 2nd Order filters with the finest 1% tolerance parts including Mylar Film Capacitors and Air-Core Inductors. You hear better dynamic impact, more transparency, faster transient response and lower distortion. All of which adds up to utterly sublime music to your ears.

The SR components are easily bi-amped with separate woofer and tweeter crossover inputs. Gold-plated terminals resist corrosion, and three levels of tweeter attenuation let you dial in the treble balance that's right for you.

**Get the full SR technology story by reading the SR Series white papers at [www.polkaudio.com/partners/papers.php](http://www.polkaudio.com/partners/papers.php)**



SIGNATURE  
REFERENCE

# COAXIALS

## SR6500 + SR5250



*SR6500 Coaxial mode  
with 6" x 9" adapter.*



*SR6500 Coaxial mode  
with angled and  
straight tweeter posts.*



*SR5250 Coaxial &  
Component options  
with 5" x 7" /  
6" x 8" adapter.*



*SR5250 Coaxial*



*SR5250 Driver  
with 6 1/2" adapter.*

## GREAT FIT, ULTIMATE FLEXIBILITY

### A Little Coaxing, It Goes Coaxial.

Each driver's phase alignment plug prevents destructive interference as sound waves launch off the cone to eliminate peaks and dips in frequency response. Remove the plug, use the supplied and easy-to-install tweeter posts, and you enjoy the same great performance from a coaxial configured setup.

### Fitting Performance.

With a 2 1/2" mounting depth, 15 screw holes and a slim basket profile, SR drivers are easy to mount in virtually any car. Supplied spacer rings ease installation in shallow-depth doors, and supplied adapters allow you to use the SR components in a wide variety of factory openings.

### Build Exactly The System You Want.

If you'd rather build your own system, all SR Signature Series components are available individually and come packaged one to a box. Here's a list of individual components and their model numbers:

#### Individual Components

SR1001	22mm Ring Radiator Tweeter (with all mounting parts)
SR6501	6 1/2" Driver
SR5201	5 1/4" Driver
SR6500xo	Passive Crossover
SR5250xo	Passive Crossover

**“...SR6500 component sets are the best component sets and coaxes I have tested: the best performance, the best cosmetics, the best engineered...”**

*Car Audio & Electronics, 2005*

<b>Specifications</b>	<b>SR6500 6 1/2"</b>	<b>SR5250 5 1/4"</b>
Continuous Power Handling	125 Watts	100 Watts
Peak Power Handling	250 Watts	200 Watts
Impedance (Nominal)	4 Ohms	4 Ohms
Frequency Response (+/-3dB)	40 Hz - 30 kHz	60 Hz - 30 kHz
Sensitivity (2.83V)	89 dB	89 dB
Driver Mounting Diameter	5 5/8" (142.9 mm)	4 3/4" (120.6 mm)
Driver Mounting Depth	2 9/16" (64.9 mm)	2 1/4" (56.41mm)
Tweeter Flush Cup Mounting Diameter	2" (50.8 mm)	2" (50.8 mm)
Tweeter Angle Mount Cup Mounting Diameter	1 3/4" (44.5 mm)	1 3/4" (44.5 mm)
Tweeter Flush Cup Mounting Depth	1" (25.4 mm)	1" (25.4 mm)
Tweeter Angle Mount Cup Mounting Depth	5/8" (15.87 mm)	5/8" (15.87 mm)
Grille Height	1 1/8" (28.7 mm)	1 1/8" (28.7 mm)
Grille Diameter	6 15/16" (176.2 mm)	6 3/16" (157 mm)
Crossover Frequency	3100 Hz	4600 Hz
Driver Crossover Slope (Low Pass)	2nd Order, 12 dB/Octave	2nd Order, 12 dB/Octave
Tweeter Crossover Slope (High Pass)	3rd Order, 18 dB/Octave	3rd Order, 18 dB/Octave
Tweeter Attenuation Level Settings	+1 dB, 0 dB, -1.5 dB, -3 dB	+2 dB, 0 dB, -1.5 dB, -3 dB

<b>Thiele/Small Parameters</b>	<b>SR6500 6 1/2" Driver</b>	<b>SR5250 5 1/4" Driver</b>
Fs	60 Hz	71 Hz
Re	3.5 Ohms	3.6 Ohms
Z	4 Ohms	4 Ohms
Qms	10.3	8.28
Qes	0.7	0.78
Qts	0.65	0.72
Le	0.38 mH	0.25 mH
Vas	0.4 Cu Ft (11.3 L)	0.2073 Cu Ft (5.87 L)
Cms	440 um/N	490 um/N
BL	5.6 T-m	4.6 T-m
Sd	21 Sq In (135 Sq Cm)	14.33 Sq In (92.46 Sq Cm)
Xmax Linear	0.16" (4mm) Peak (Double for Peak to Peak)	0.1" (2.5 mm) Peak (Double for Peak to Peak)
Xmax-Mechanical	0.32" (8.1mm) Peak (Double for Peak to Peak)	0.362" (9.2 mm) Peak (Double for Peak to Peak)
Voice Coil Diameter	1.5" (38.1mm)	1" (25.4 mm)



SIGNATURE  
REFERENCE



# SUBWOOFER

S R 1 2 4 + S R 1



SR124 subwoofer



SR104 subwoofer

## DEEP, POWERFUL, PRECISE

### Ultra-Performance SR Signature Series Subwoofers.

The same slavish dedication to detail, technology and the finest materials that make SR components stand out as the best in their class were used to bring you SR Series subwoofers. SR subs pound out relentless competition-grade bass performance. But good bass is about more than just deep and loud—it's also about sound that's tight, musical and clean, and nothing delivers life-like bass like SR Series subwoofers.

Available in both single and dual voice coil configurations, SR subs were engineered to produce the ultimate in big, tight bass. Each subwoofer employs dual spiders to ensure tight control of their long-excursion cones. We used a Klippel Distortion Analyzer that measures driver behavior under high output to help us maximize linearity, minimize distortion and flatten response. A 2 1/2" glass/epoxy voice coil former, wound with four layers of heavy-gauge high-temperature copper-clad aluminum wire, provides high power handling along with high efficiency and fast response. An extensive network of vents cools the voice coil for maximum reliability.

Get the full SR technology story by reading the SR Series white papers at [www.polkaudio.com/partners/papers.php](http://www.polkaudio.com/partners/papers.php)



# RS

0 4

*SR subwoofers work great in sealed and vented enclosures, and look great in your car!*



Specifications	SR124 12"	SR124dvc 12"	SR104 10"	SR104dvc 10"
Nominal Diameter	12"	12"	10"	10"
Overall Diameter	12.5"	12.5"	10"	10"
Mounting Hole Diameter	11"	11"	9"	9"
Bolt Hole Circle	11.68"	11.68"	9.64"	9.64"
Magnet Diameter	7"	7"	7"	7"
Mounting Depth	7.6"	7.6"	7"	7"
Driver Displacement	.14 Cu Ft	.14 Cu Ft	.12 Cu Ft	.12 Cu Ft
Frequency Response	20-200 Hz	20-200 Hz	25-200 Hz	25-200 Hz
Thermal Power Handling	700 Watts	700 Watts	700 Watts	700 Watts
Peak Power Handling	1400 Watts	1400 Watts	1400 Watts	1400 Watts
Nominal Impedance	4 Ohms	Dual 4 Ohms	4 Ohms	Dual 4 Ohms
Sensitivity (2.83V)	88 dB	91 dB @ 2 Ohms, 85dB @ 8 Ohms	87 dB	90 dB @ 2 Ohms, 84 dB @ 8 Ohms
Net Weight	26.5 lbs	26.5 lbs	24.5 lbs	24.5 lbs

Thiele/Small Parameters	SR124 12"	SR124dvc 12"	SR104 10"	SR104dvc 10"
Fs	29 Hz	30 Hz	35 Hz	35 Hz
Qts	0.54	0.59	0.55	0.6
Qes	0.59	0.66	0.59	0.66
Qms	8	8	9	9
Vas (liters)	53	53	22	22



SIGNATURE  
REFERENCE

# SR SERIES

## PRODUCT LINE

### MOBILE AUDIO FOR SERIOUS LISTENERS

SYSTEMS + COAXES + SUBWOOFERS

### SR SERIES

The best way to preview the SR Signature Series for yourself is to visit your local Authorized Polk Audio Dealer. To find a dealer near you, go to [www.polkaudio.com](http://www.polkaudio.com); Discover why, in the world of mobile audio, it doesn't get any better than this.

#### Products Born of Passion.

Baltimore, Maryland-based Polk Audio is an award-winning manufacturer of high performance audio products. Founded by Chairman Matthew Polk and CEO George Klopfer in 1972, Polk Audio holds over 50 patents for advances in audio design and technology. Polk's products include loudspeakers and electronic components for home, auto and marine applications, the first XM satellite home component tuner, the world's first high performance active IP-addressable loudspeaker, and I-Sonic™—the first entertainment system to include HD Radio®, XM Connect & Play capability and a DVD player. Polk products are available through specialist consumer electronics retailers worldwide.

### WARNING

#### Listen Carefully!

Polk Audio loudspeakers and subwoofers are capable of playing at extremely high volume levels, which could cause serious or permanent hearing damage. Polk Audio, Inc. accepts no liability for hearing loss, bodily injury or property damage resulting from the misuse of its products.

Keep these guidelines in mind and always use your own good judgment when controlling volume:

- You should limit prolonged exposure to volumes that exceed 85 decibels (dB).
- High volume in an automobile can hinder your ability to safely operate a vehicle.
- You are responsible for knowing the local laws governing acceptable mobile volume levels.

For more about safe volume levels, go to [www.polkaudio.com/education/article/SPU](http://www.polkaudio.com/education/article/SPU). Or refer to the Occupational Health and Safety Administration (OSHA) guidelines at [www.osha.gov/dts/osta/otm/noise/standards\\_more.html](http://www.osha.gov/dts/osta/otm/noise/standards_more.html).



SIGNATURE  
REFERENCE

Polk Audio, Inc., 5601 Metro Drive, Baltimore, Maryland 21215 RP2123-2  
Copyright© April 2006. All rights reserved.

[WWW.POLKAUDIO.COM](http://WWW.POLKAUDIO.COM)

**polk**audio®